

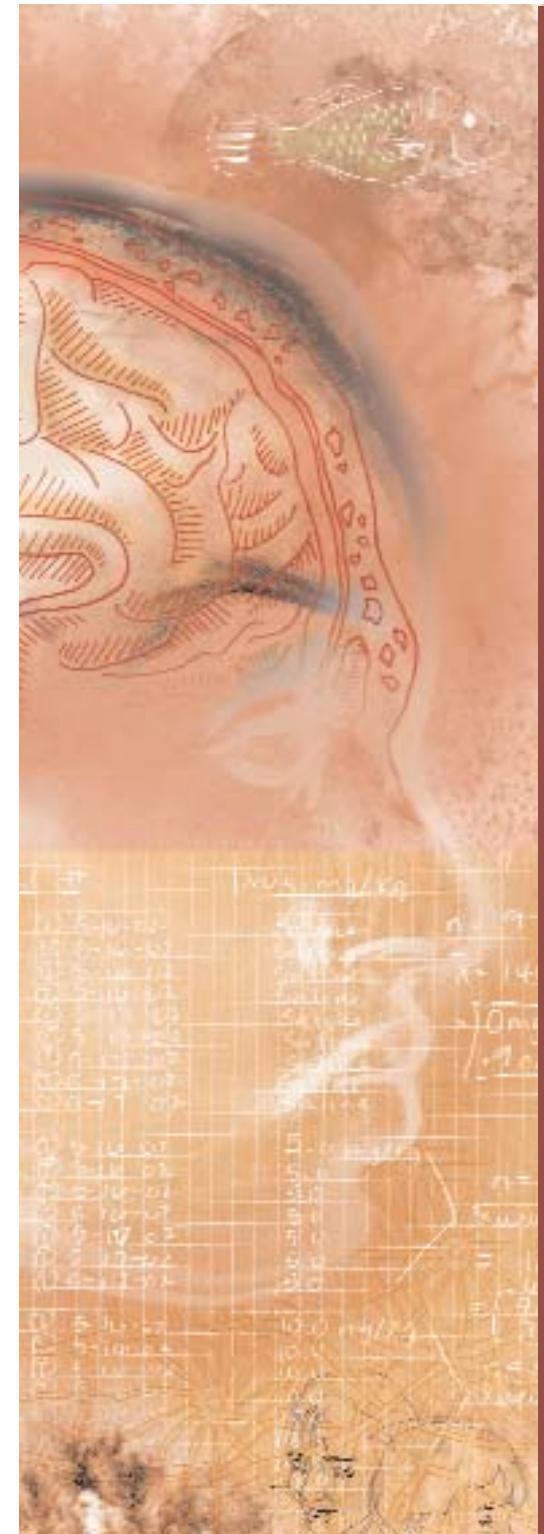
## About the CBN

CBN is a consortium of seven metro-Atlanta, Ga., colleges and universities,



including Georgia State University, Emory University, Georgia Institute of Technology, Clark Atlanta University, Morehouse College, Morehouse School of Medicine, and Spelman College.

Some 100 neuroscientists lead the research program, along with a cadre of more than 50 graduate students and 20 postdoctoral researchers, who share the goal of understanding the basic neurobiology of complex social behaviors associated with fear, aggression, affiliation, memory and cognition, reward and reinforcement, and reproduction. CBN also directs a comprehensive education program designed to train the next generation of scientists.



Center for Behavioral Neuroscience

*Behavioral Research Advancements in Neuroscience*

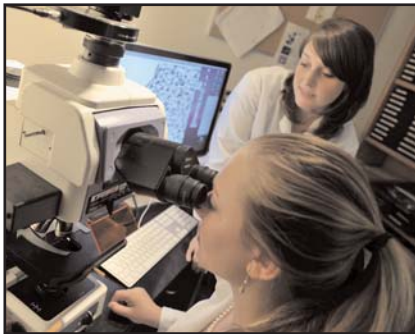
*BRAIN gave me the opportunity to gain experience working with neuroscientists in a research lab.*

– BRAIN participant



*Through the BRAIN program, I met and became friends with other students interested in neuroscience.*

– BRAIN participant



*BRAIN gives students the opportunity to conduct research with some very prominent scientists in the academic community. The students get a chance to see what working in a lab is really like and to communicate with people at different stages of their scientific careers.*

– BRAIN mentor

## What is BRAIN?

Behavioral Research Advancements in Neuroscience (BRAIN) is the hallmark program of the undergraduate education arm of the Center for Behavioral Neuroscience (CBN), a National Science Foundation Science and Technology Center. BRAIN consists of a 10-week summer research and education experience. BRAIN grows naturally from the scientific and education missions of the seven CBN member institutions (see back panel), which are committed



to increasing student interest in behavioral neuroscience and, ultimately, in the pursuit of research and other science careers (e.g. science policy, science education, and science journalism).

## Program Benefits

- An intensive, first-class research experience in the biomedical or behavioral sciences
- Mentoring from eminent scientists at Georgia State University, Emory University, Morehouse School of Medicine, Georgia Institute of Technology, Spelman College, Clark Atlanta University, and Morehouse College
- Weekly seminars on special topics to prepare students for success in research programs
- The skills necessary for the successful pursuit of a doctorate degree

## Eligibility Criteria

- Enrollment as a full-time student at a two- or four-year college or university
- B/C grade point average in science coursework; over-all G.P.A of 2.7 or higher\*
- Must be able to attend the entire BRAIN Summer Program
- Previous BRAIN participants are ineligible to apply
- Students may not be enrolled in any summer courses or hold a job during the duration of the BRAIN program.

## Application Requirements

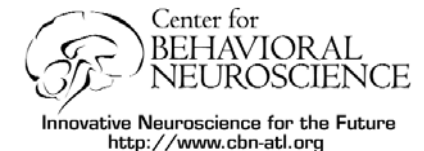
- Completion of on-line application available at <http://www.cbn-atl.org/education/brain.shtml>
- An official copy of your most current undergraduate transcript
- Resume
- Two-letters of recommendation (at least one from a science instructor or advisor)
- Typed essay

*\*Exceptions to the G.P.A. requirements may be made for those students who have had previous research experience and/or a strong sense of future goals.*

## Contact Information

Liz Weaver, MS  
Georgia State University  
Email: [eweaver1@gsu.edu](mailto:eweaver1@gsu.edu)

Kyle Frantz, Ph.D.  
Georgia State University  
Email: [kfrantz@gsu.edu](mailto:kfrantz@gsu.edu)



For more information, updates and deadlines, log on to: <http://www.cbn-atl.org/education/brain.shtml>