

## About the Center for Behavioral Neuroscience

CBN is a consortium of seven metro Atlanta, Ga., colleges and universities,

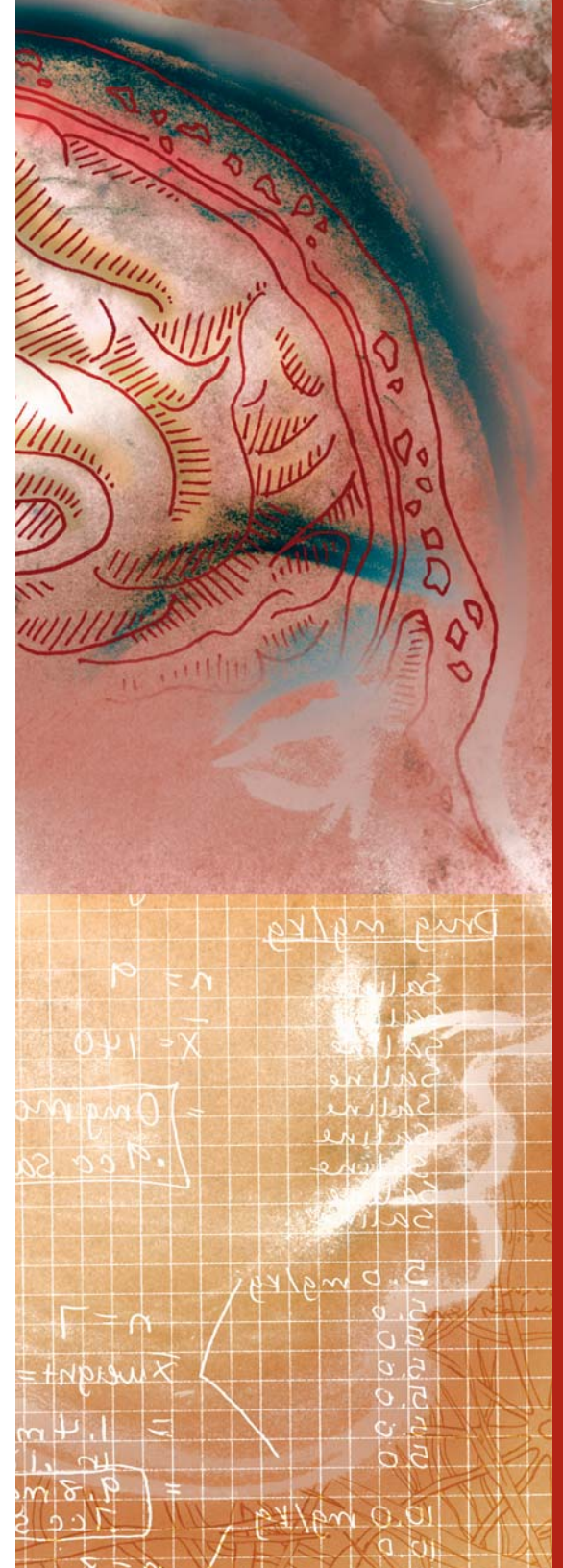


including Georgia State University, Emory University, Georgia Institute of Technology, Clark Atlanta University, Morehouse College, Morehouse School of Medicine, and Spelman College.

Some 100 neuroscientists lead the research program, along with a cadre of more than 50 graduate students and 20 postdoctoral researchers, with the goal of understanding the basic neurobiology of complex social behaviors associated with fear, aggression, affiliation and reproduction. CBN also directs a comprehensive education program designed to train the next generation of scientists.



Center for Behavioral Neuroscience  
 Georgia State University  
 P.O. Box 3966  
 Atlanta, GA 30302-3966



Center for Behavioral Neuroscience  
 Post-Doctoral Fellows Program

# CBN Post-Doctoral Fellows Program



CBN awards two-year fellowships to individuals no more than five years after receiving their Ph.D. These fellowships are available to candidates seeking to work primarily with center faculty at either Georgia State University or Emory University. Candidates for post-doctoral fellowships must be presented to CBN for consideration by a CBN faculty member who has agreed to be their primary mentor. The research of post-doctoral fellows must be integral to the research mission of the center and a collaborative effort between two or more center laboratories.

## Eligibility Criteria:

- individuals must have a Ph.D. in neuroscience or a related field and no more than five years of post-doctoral experience;
- must be sponsored by at least two CBN faculty members with whom the candidate will work on a collaborative research project as a primary part of their research (only one faculty member will act as the primary mentor).

## Program Requirements:

- CBN post-doctoral fellows must participate in the research and/or education activities related to the center's mission. This includes participation in collaborative research under the supervision of at least two faculty members and regular participation in collaboratory meetings or core involvement. Collaboratories are groups of investigators that discuss multi-disciplinary approaches to complex research questions. CBN cores provide members access to cutting-edge technology (imaging, viral vectors, micro-arrays, etc.) for more innovative research.
- post-doctoral fellows are expected to apply for a NRSA or equivalent source of support during their fellowship tenure.

## Application Process:

- Two letters of support from CBN faculty mentors (primary and secondary) with whom the candidate will do collaborative research;
- Statement from candidate;
- Two letters of recommendation from previous mentors;
- Candidate's CV;
- Candidate will be informed once all application materials are received;
- Download application via the CBN website at:  
[http://www.cbn-atl.org/research/application\\_postdoc\\_fellowship.shtml](http://www.cbn-atl.org/research/application_postdoc_fellowship.shtml);
- Applications are reviewed and approved by the CBN's Executive Committee.

## Contact:

Kelly Powell, Ph.D.  
Post-Doctoral Education Chair  
Phone: 404-463-0941  
E-mail: [kpowell@gsu.edu](mailto:kpowell@gsu.edu)



CBN post-doctoral fellows have access to the center's core technologies, workshops, courses, teaching opportunities and resources for other forms of education at the post-doctoral level.

